

# Tackling climate change in the community

Paul Woodcock

Director of Planning & Regeneration,  
Environment and Development  
Services

# Overview

- NI 186 Per capita reduction in CO2 emissions in the Local Authority area
- Local action
- Sub-regional working:
  - Climate Change Leadership Programme
  - Engaging the Third Sector
  - Carbon Calculator
  - Activity in schools

# What is NI 186?

- Percentage reduction of the per capita CO<sub>2</sub> emissions in the Local Authority Area
- Annual amount of end user CO<sub>2</sub> emissions across an agreed set of sectors:
  - Housing
  - Road transport
  - Business

# Wider linkages

- NI 167 Congestion – average journey time per mile during the morning peak
- NI 185 CO<sub>2</sub> reduction from local authority operations
- NI 187 Tackling fuel poverty – % of people receiving income based benefits living in homes with a
- NI 194 Air quality – % reduction in NO<sub>x</sub> and primary PM
- NI 198 Children travelling to school – mode of transport usually used
- Environment and Climate Change Strategy (*Draft*)

## NI186 reduction in CO2 Emissions calculation (DECC 09 revised 6.11.09)



Total CO2 emissions per capita (t)

Rotherham

2005 8.2

2006 6.9

2007 6.6

<b>Current baseline</b>	<b>6.6</b>
<b>Reduction from 2005</b>	<b>1.54</b>
<b>Percentage change</b>	<b>-18.88% (UK: -2.3%)</b>

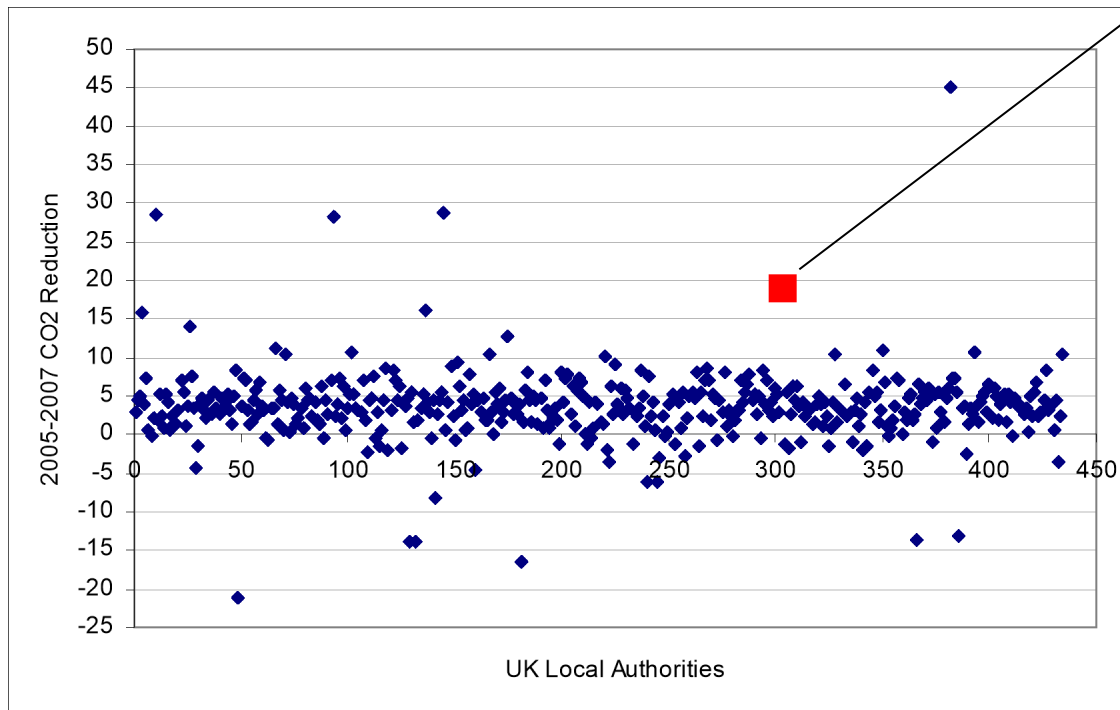
# NI186: Reduction in CO2 Emissions 2005-2007

‘5<sup>th</sup> in UK and leading the region?’

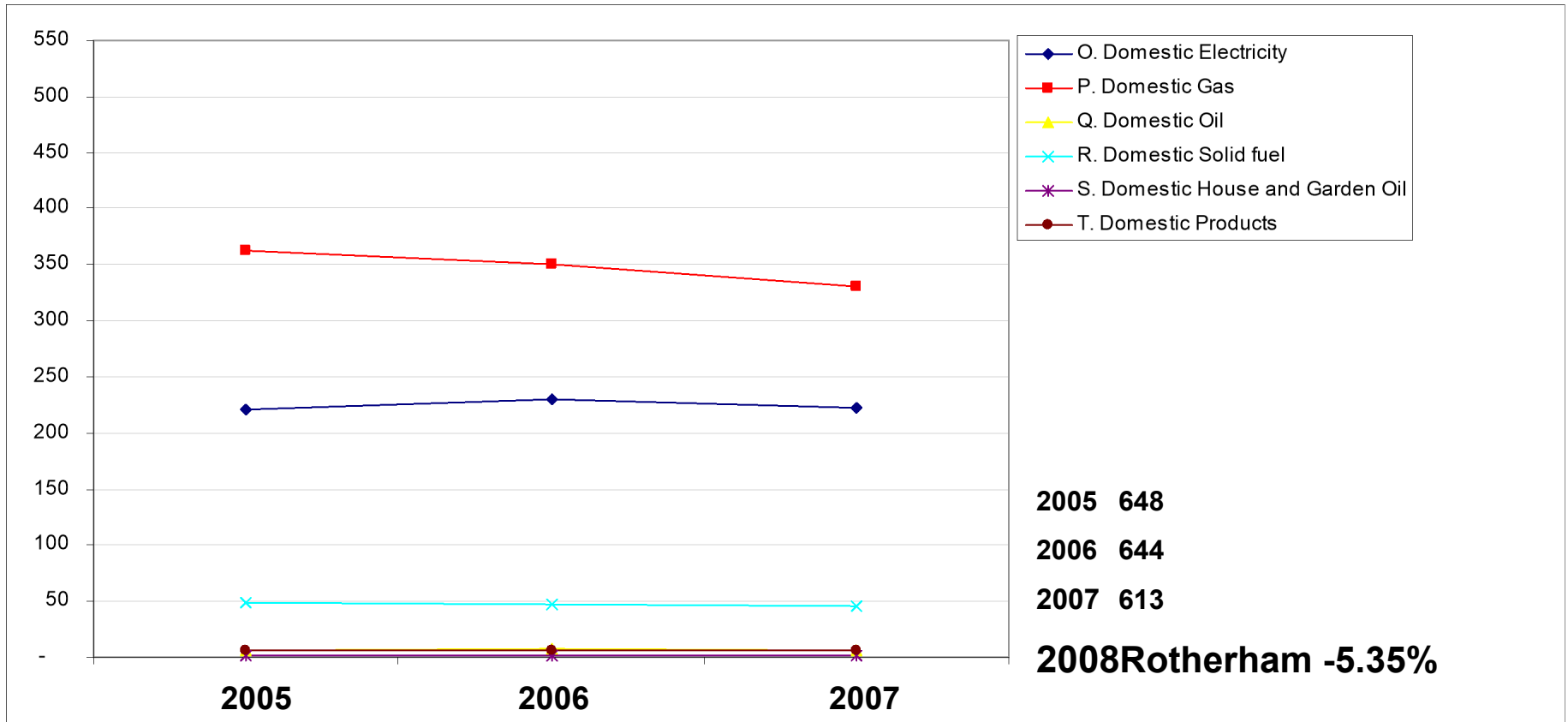
2006 (6.9)

2007 (6.6)

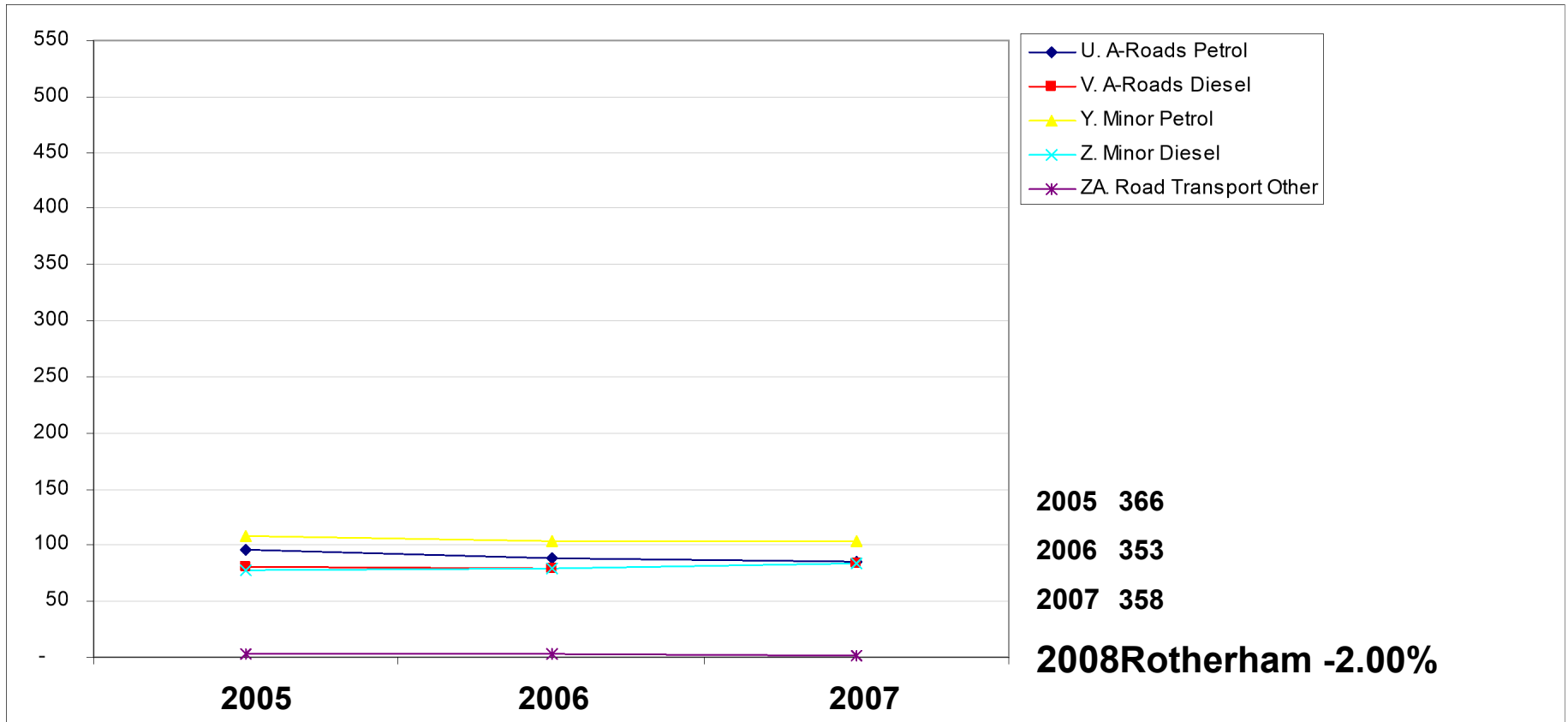
Rotherham (18.88%)



# NI186: The Local Picture Domestic (kt CO2)

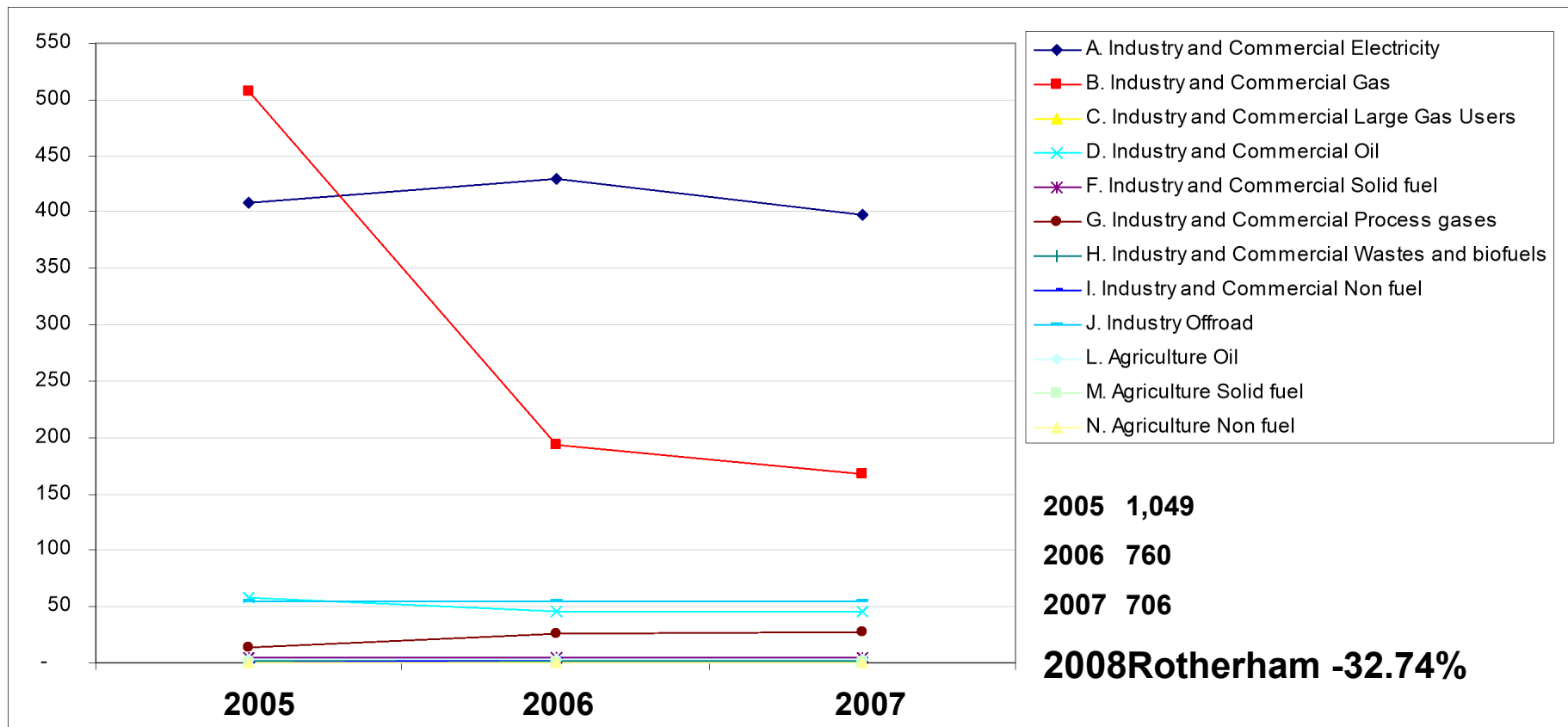


# NI186: The Local Picture Roads (kt CO2)





# NI186: The Local Picture Industry and Commercial (kt CO2)



## NI186: Reduction in CO2 Emissions Querying the DECC dataset

### **“In 2005**

DECC's methodology of the treatment of large energy users changed between 2005 and 2006-2007. When looking at NUTS4 locations: Rotherham (UKE3103) and Tonbridge and Malling (UKJ4211) in 2005, the gas consumption figure does NOT EXCLUDE a power station or a large industrial consumer (UKE30103 and UKJ4211 is not associated with footnotes 4-9.”

### **“However in 2006 and 2007:**

Rotherham's gas consumption figure EXCLUDES the gas consumption of one large industrial consumer (see footnote 6).”

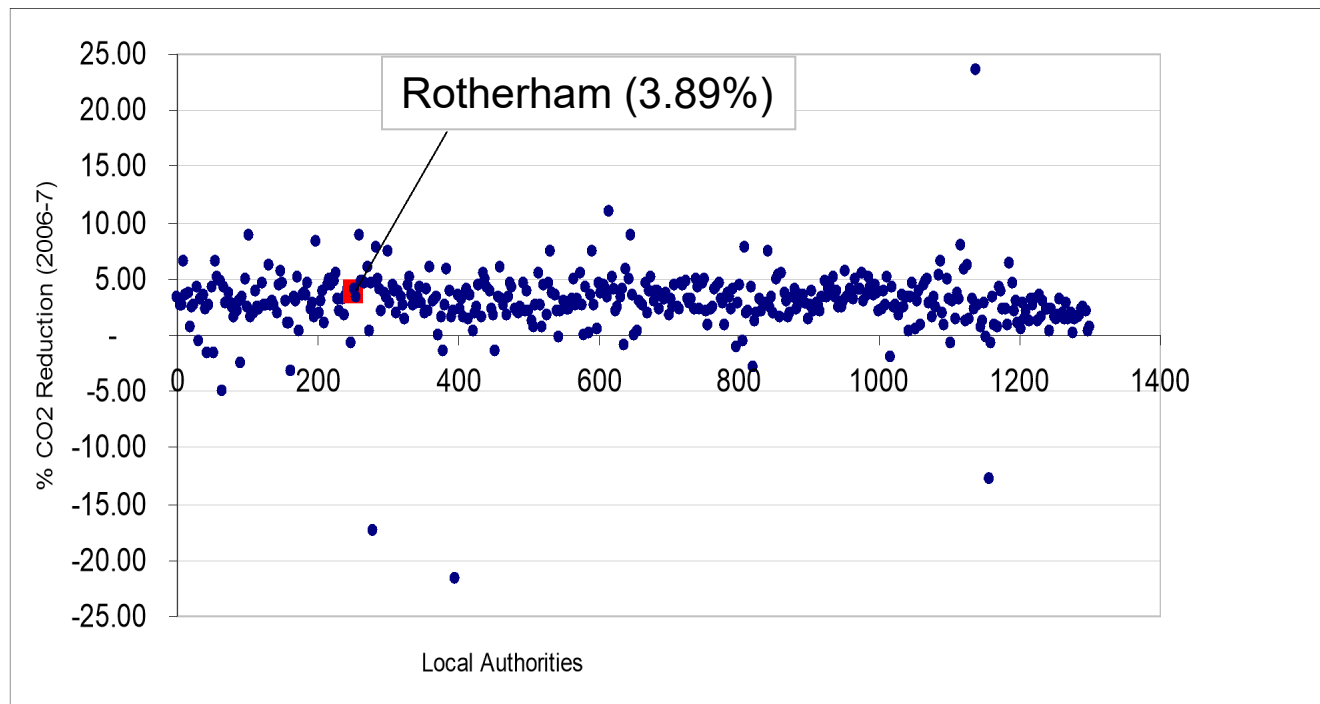
The change is mainly due to a large industrial user being included in the 2005 figure and not included in 2006 onwards.

# NI186: Reduction in CO2 Emissions 2006-2007

‘A more accurate picture?’

2006 (6.9)

2007 (6.6)



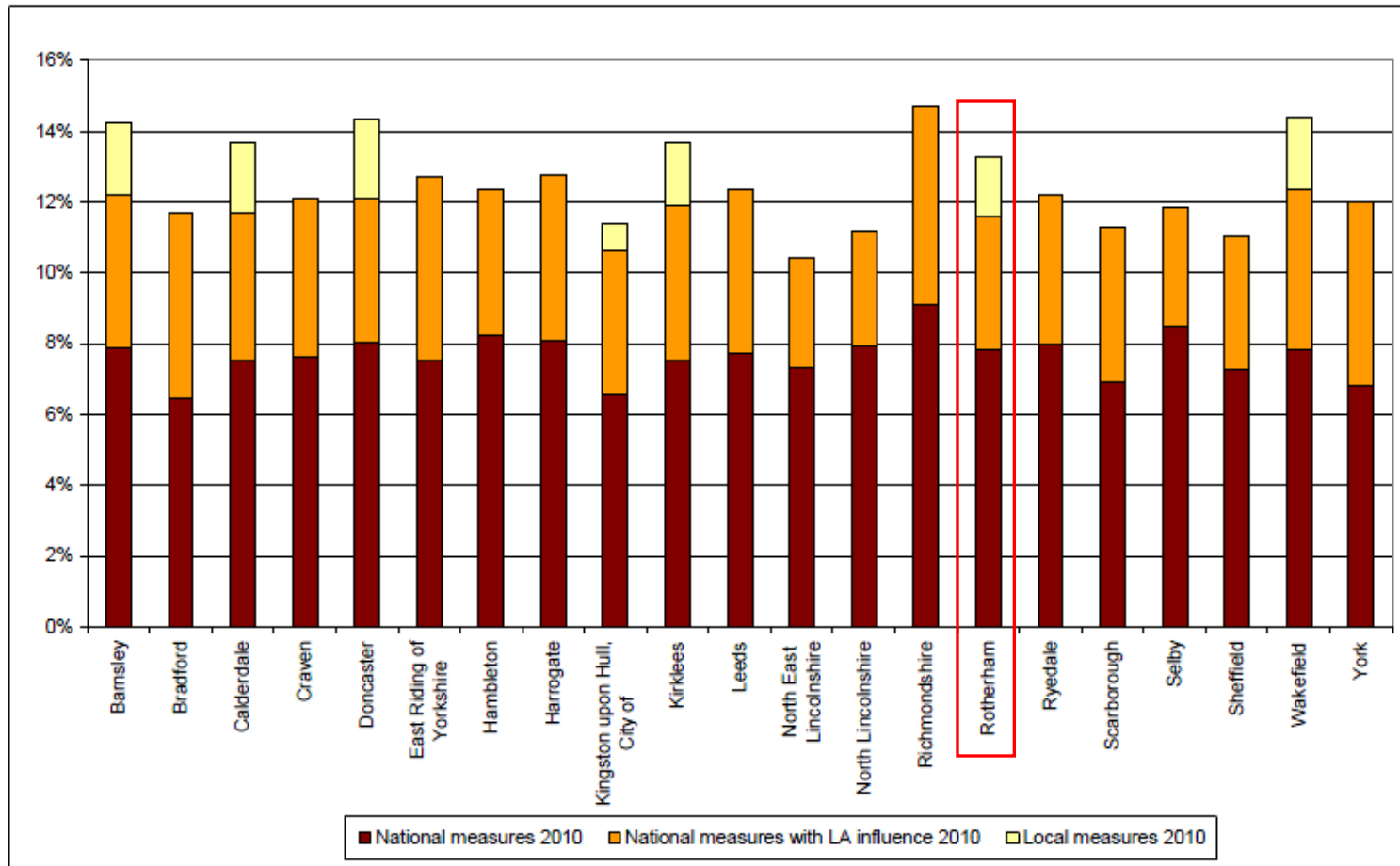
## NI186: Reduction in CO2 Emissions

### Actions split into three groups:

1. Purely national actions but still influencing community emissions
2. National actions but can be improved in performance with influence by LAs
3. Purely local actions implemented by LAs or other organisations

Source: Defra 2008 'Analysis to support climate change indicators for local authorities'

**Figure 8.7** Estimated emissions savings in 2010 split by category of measure (all measures) in Yorkshire and Humberside

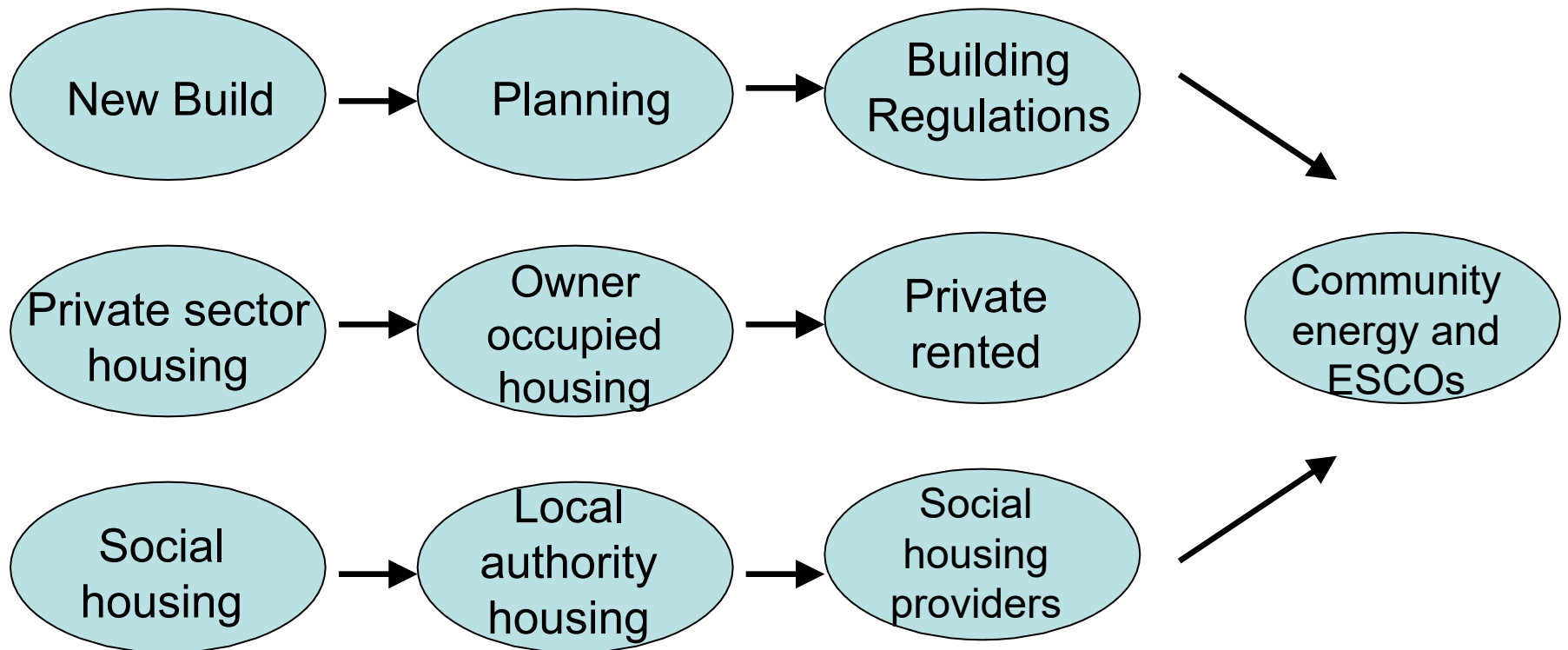


Note: 'Local measures' only includes Smarter Choices transport measures.

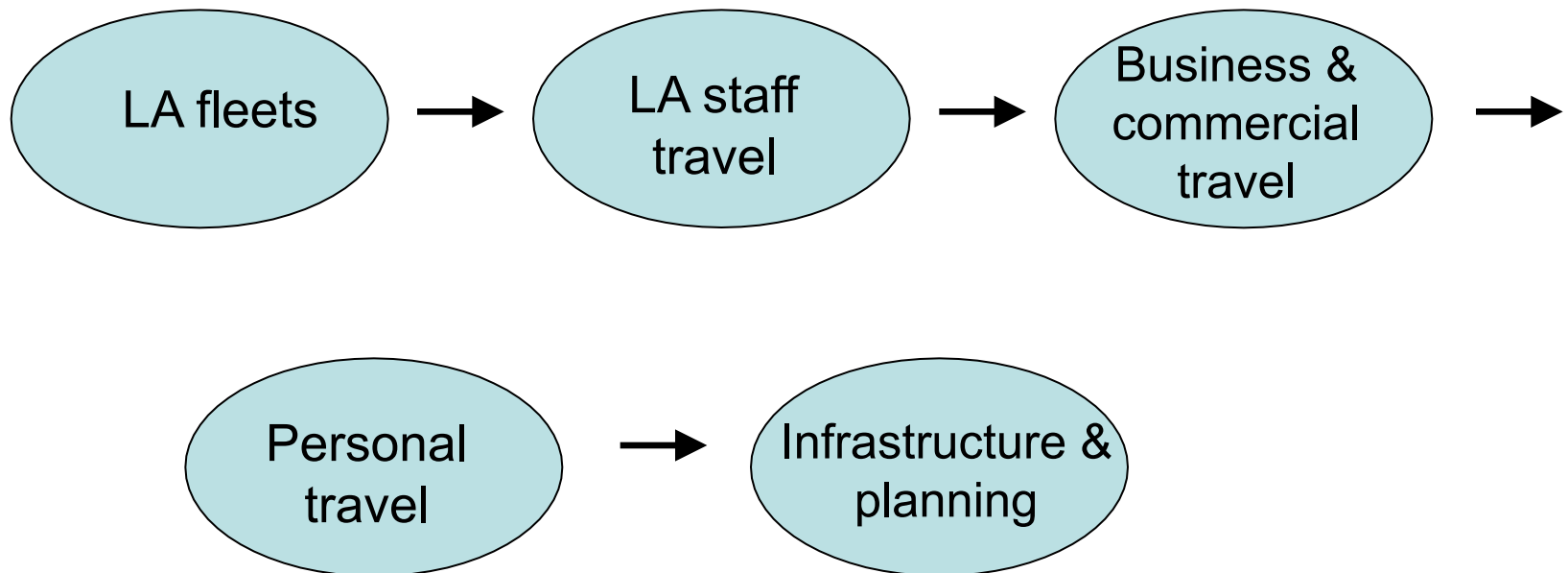
# Local Action

- Although data reported nationally, a local evidence base is required for both NI 186 and CAA
- 4 key areas:
  - Reducing domestic emissions
  - Reducing transport emissions
  - Reducing non-domestic emissions
  - Reducing emissions across the community

# Reducing domestic emissions

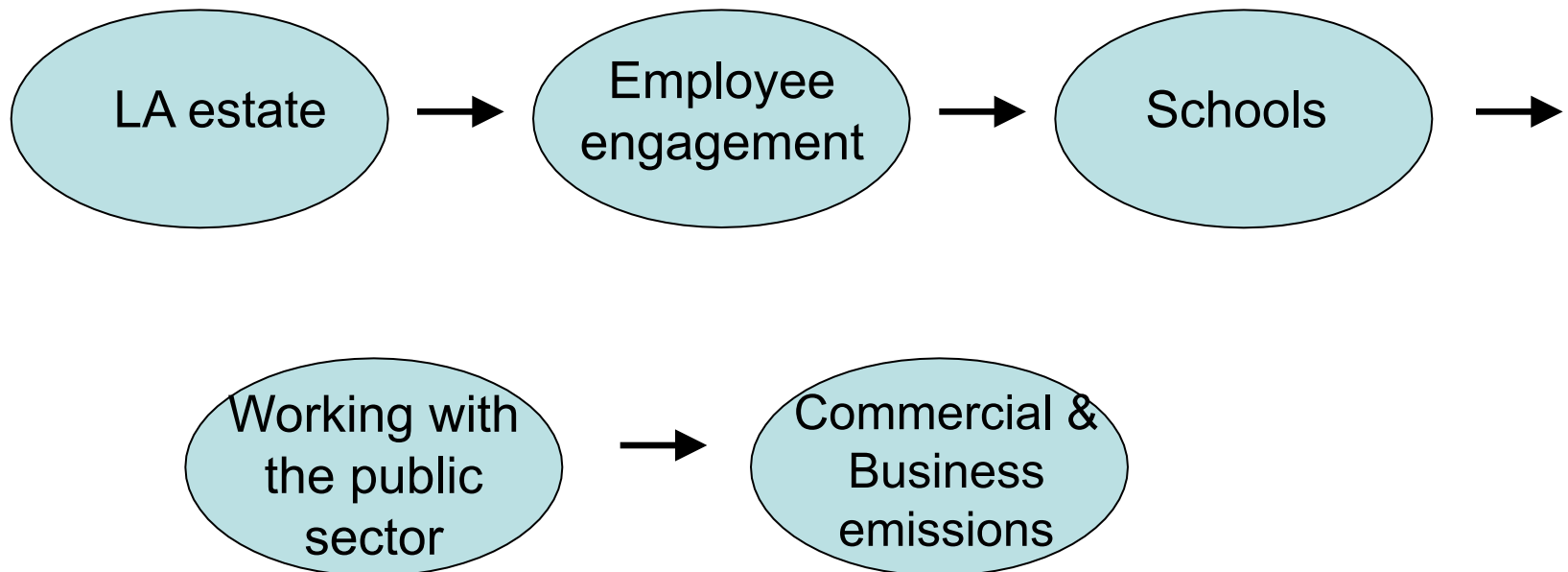


# Reducing transport emissions

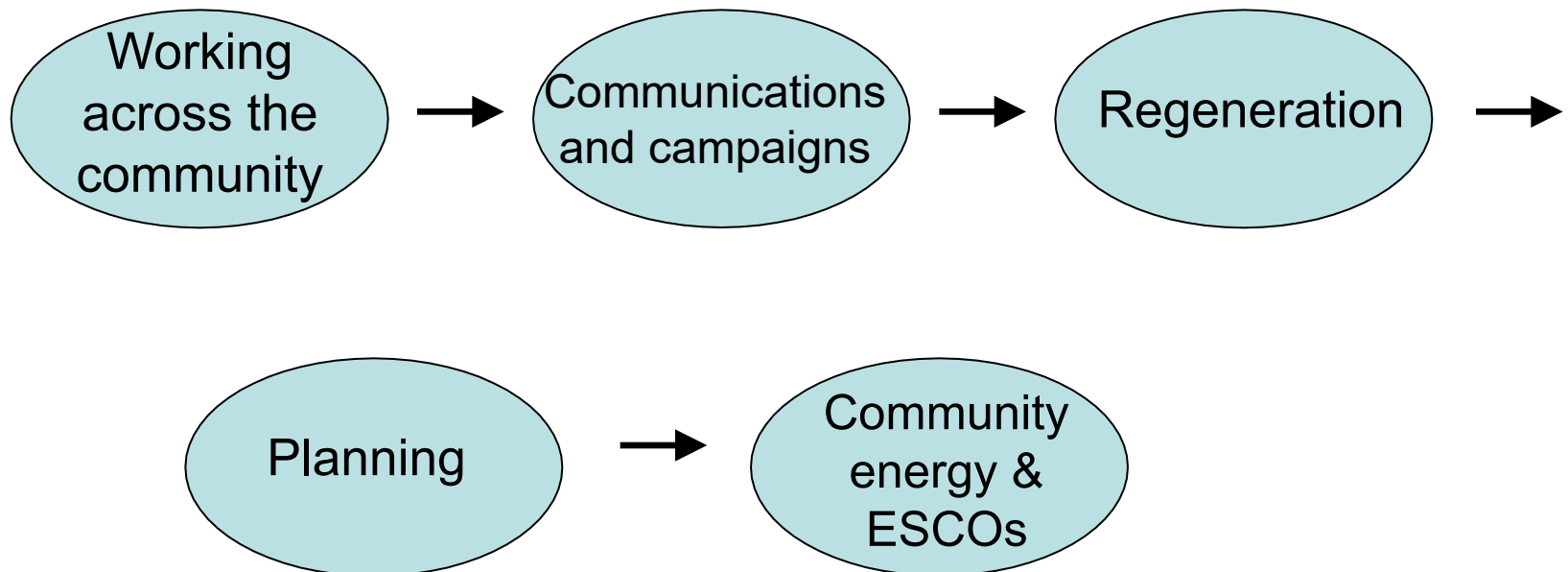




# Reducing non-domestic emissions



# Reducing emissions across the community



# Example activities

- Insulating entire housing stock
- Lifestyle changes of households
- Efficient heating in residential buildings
- Lights and appliances in residential buildings
- Increasing travel by public transport
- Building energy efficiency and management in non-residential buildings
- All industry: energy and resource efficiency
- Biomass heating for all types of buildings
- On-shore wind generation

# South Yorkshire Climate Change Network aims

To assist South Yorkshire in becoming one the best performing sub-regions in the country in respect of climate change by:

- Working together to meet the requirements of the NIs
- Providing a focus for coordinated dialogue and decision making
- Ensuring SY contributes effectively to regional and national strategy & action planning
- Collecting and disseminating key information & best practice
- Working together to raise awareness and gain commitment within the 4 councils and the wider community

# SY Climate Change Leadership Programme

- Series of sub-regional workshops aimed at key decision makers
- Council operations – 25<sup>th</sup> January
- Adaptation – tbc March 2010
- Community emissions – tbc June 2010
- Specific event for Members

# Engaging the Third Sector

- 6 month project
- Develop a Toolkit which includes hard copy/web-based guidelines on:
  - Improving resource/energy efficiency
  - Reduce/reuse/recycling waste
  - Sustainable transport
  - Sustainable procurement
  - Domestic housing improvements
  - Adaptation
- Signposting to available help and information within the VCFS
- Identification and communication of best practice from the VCFS
- Training workshops as required
- Champions network





# Carbon calculator



# SYCCN

South Yorkshire Climate Change Network

Total footprint been emitted this month: 1,534 kgCO<sub>2</sub>

Pledged reduction this month: 712 kgCO<sub>2</sub>

## CO2 Calculator

Barnsley Doncaster  
Sheffield Rotherham

[Home](#)
[Log-in](#)
[Sign up](#)
[Map](#)

## Welcome to the South Yorkshire Climate Change Network carbon commitment project

Use our CO<sub>2</sub> calculator to find out your carbon footprint.

You are able to take your CO<sub>2</sub> footprint calculation based on either your energy bills or what you use.

The calculator has been designed so that you can personalise it, for example when calculating car use, if you are including 3 cars a default name will come up; car1, car2 and car3. These can be changed and personalised to read; Jane's Car, John's Car and Pete's Car.



**BARNSELY**  
Metropolitan Borough Council



We only have ONE planet

If everyone in the world consumed resources as we do in the UK we would need THREE planets to support us.

Your carbon footprint is the measure of the impact your activities have on the environment, and in particular climate change. It relates to the amount of greenhouse gasses produced in your day-to-day activities through burning fossil fuels or electricity, heating and transportation etc.

Did you know... The UK's carbon footprint is 648 million tonnes of carbon dioxide (CO<sub>2</sub>) each year equating to an average of 10 tonnes of CO<sub>2</sub> each year per person.

Did you know... in Yorkshire each of us produces around 11.5 tonnes of CO<sub>2</sub>

# South Yorkshire Schools Climate Change Project

- Project Website
- Display
- Eco-Schools data search
- Database of specialist support and contacts





# Future items?

- Fuel poverty/energy efficiency in the home
- Local attitudes and behaviours to climate change
- Recycling issues
- Green Business

**Any questions?**